

A cinematic scene with people in 19th-century attire in a garden. In the background, a man in a top hat and a woman in a bonnet stand near a birdcage. In the foreground, a person in a dark coat and top hat is partially visible on the right. The scene is set in a lush garden with trees and foliage, and the lighting is soft and atmospheric.

**DIRECTOR OF  
PHOTOGRAPHY**

I'm a London-based Director of Photography working across documentary, drama, branded content and corporate projects, with a strong emphasis on cinematic storytelling and visual narrative. My work has taken me across the globe, from intimate observational films to large-scale productions, contributing to BAFTA, Emmy, and Grierson-recognised titles. I bring a calm, collaborative presence on set and a precise, creative approach to everything from complex studio builds and high-end VFX to fast-moving location work and macro detail. I'm passionate about the craft and committed to helping directors shape stories with texture, tone, and emotional resonance.

# ANDREW FLEMING



# FACTUAL HIGHLIGHTS

## AWARDS & NOMINATIONS

PREHISTORIC PLANET - BBC - APPLE TV

- ROCKIE AWARD – ENVIRONMENTAL & WILDLIFE
- BROADCAST TECH INNOVATION AWARD – BEST VFX
- TELEVISUAL BULLDOG AWARD – BEST VFX

A REAL BUG'S LIFE - PLIMSOLL - DISNEY +

- 4X CHILDREN'S & FAMILY EMMY AWARDS (INC OUTSTANDING CINEMATOGRAPHY)
- WILDScreen PANDA AWARD - BEST NATURAL HISTORY SERIES
- EMMY NOMINATION – OUTSTANDING SCIENCE & TECHNOLOGY DOCUMENTARY

ROYAL AUTOPSY - PHOENIX TV - SKY HISTORY

- RTS SOUTHERN AWARD – BEST FACTUAL SERIES

EARTHSTORM - WALL TO WALL - NETFLIX

- EMMY NOMINATION – OUTSTANDING SCIENCE & TECHNOLOGY DOCUMENTARY

KILLERS OF THE COSMOS - WALL TO WALL - DISCOVERY +

- GOLD PANDA NOMINATION - SCIENCE & TECHNOLOGY DOCUMENTARY

BECOMING YOU - WALL TO WALL - APPLE TV

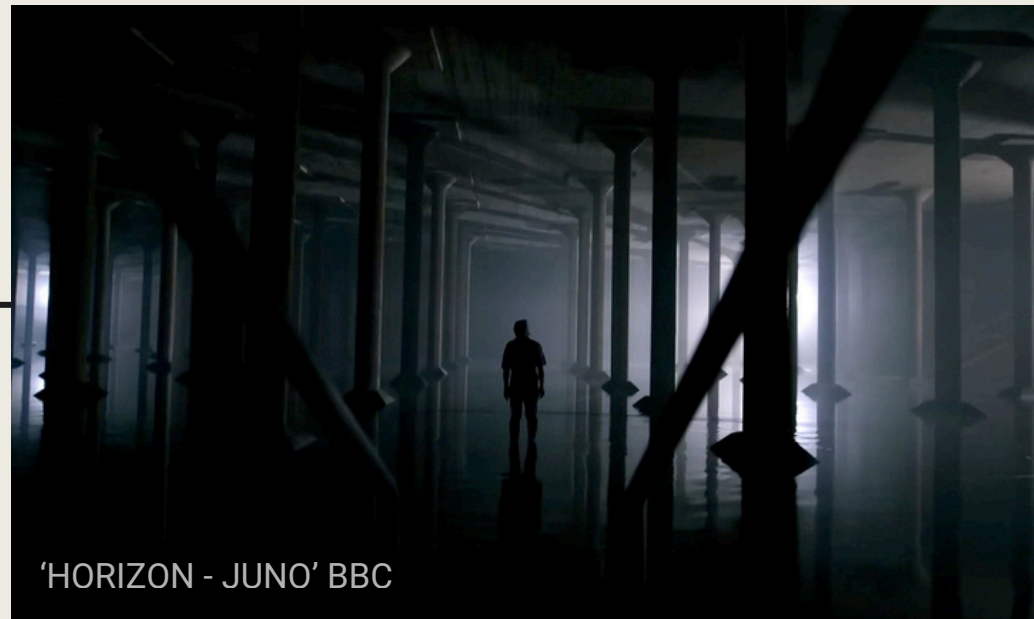
- IDA NOMINATION - BEST EPISODIC SERIES

BABIES - NUTOPIA - NETFLIX

- MULTIPLE EMMY NOMINATIONS - OUTSTANDING HOSTED SERIES

SPACE'S DEEPEST SECRETS - BBC STUDIOS - DISCOVERY

- EMMY NOMINATION – OUTSTANDING SCIENCE & TECHNOLOGY DOCUMENTARY



WONDERS OF LIFE - BBC STUDIOS - BBC

- EUROPEAN SCIENCE TELEVISION AWARD - BEST TELEVISION DOCUMENTARY

WONDERS OF THE UNIVERSE - BBC STUDIOS - BBC

- BAFTA NOMINATION - BEST SPECIALIST FACTUAL
- GRIERSON NOMINATION - BEST SCIENCE DOCUMENTARY
- BAFTA CRAFT NOMINATION - BEST VISUAL EFFECTS

## NOTABLE CREDITS

- UNIVERSE - BBC STUDIOS - BBC
- ALIEN WORLDS - WALL TO WALL - NETFLIX
- ALBERT: THE POWER BEHIND VICTORIA - ELEPHANT STUDIOS - CH5/APPLE TV
- WALLIS: THE QUEEN THAT NEVER WAS - ELEPHANT STUDIOS - CH5
- SPECTACULAR EARTH - BBC STUDIOS - BBC/APPLE TV
- SCIENCES GREATEST MYSTERIES - BBC STUDIOS - BBC
- HORIZON (MULTIPLE) - BBC STUDIOS - BBC
- THE TRUTH ABOUT (MULTIPLE)- BBC STUDIOS - BBC
- HIDDEN KILLERS OF THE VICTORIAN HOME - MODERN TV - BBC
- LIGHT AND DARK - BBC STUDIOS - BBC
- SECRETS OF THE DEAD (CLEOPATRAS TOMB) - DRAGONFLY - PBS
- BEGINNNING AND END OF THE UNIVERSE - BBC STUDIOS - BBC
- SCIENCE CLUB (MULTIPLE)- BBC STUDIOS - BBC



# COMMERCIAL & BRAND

My commercial and brand portfolio includes global campaigns for major brands such as Dove, Stylist, LG, HSBC, Nestlé, Audi, EE, Royal Mail, Garnier, and Swarovski. These projects have taken me across diverse locations and creative briefs, delivering high-end content for commercial and digital platforms. The work has been featured in leading publications including Ad Age, TIME, The Huffington Post, AdWeek, Creativity, and The Guardian, with campaigns shortlisted for the ADCAN Awards – reflecting both creative impact and industry recognition.



DOVE - TVC  
ENVIRONMENTAL DEFENSE



STYLIST - DIGITAL  
CAN YOU BE INSPIRED BY A SCENT



LG - DIGITAL  
THE ART OF ESSENCE



DHL - TVC  
DREAM BIG





# NARRATIVE

I trained in drama and narrative production, which continues to inform my approach to both documentary and scripted work. My short films have screened at festivals including Raindance, Cannes, and the London Short Film Festival, where they've been recognised for their visual style and sensitivity to performance. My documentary experience has recently expanded into drama-documentary and historical reconstruction, with credits including Royal Autopsy and feature length biogs on Prince Albert and Wallis Simpson. These projects have strengthened my ability to combine cinematic visual language with factual storytelling—delivering period-accurate sequences with depth, atmosphere, and clarity.



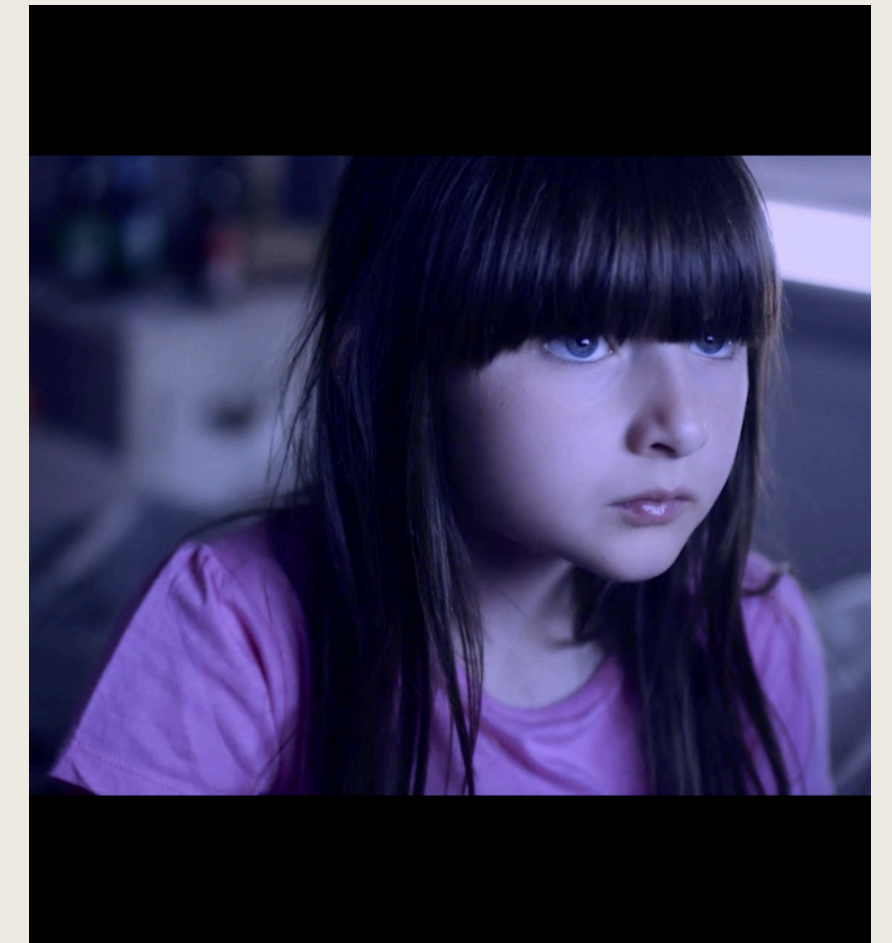
ROYAL AUTOPSY  
PHOENIX TV - SKY HISTORY



ALBERT: THE POWER BEHIND VICTORIA  
ELEPHANT STUDIOS - CH5/APPLE TV



WALLIS: THE QUEEN THAT NEVER WAS  
ELEPHANT STUDIOS - CH5



PRETTY THINGS  
RAINDANCE/OUTFEST LOS ANGELES FIM FESTIVALS



# CONTACT DETAILS & ADDITIONAL INFO



## GET IN TOUCH

**Email**  
amfleming@mac.com

**Linkedin**  
[Andrew-fleming\\_DOP](#)

**Website**  
[www.andrew-fleming.com](http://www.andrew-fleming.com)

**Mobile**  
07780906918

## CREDENTIALS

- 1<sup>st</sup> Class Hons: Film & Photography (University of Westminster)
- Broadcast Young Talent Winner: Cinematography
- BECTU Member
- 2 x Passports
- iVisa (Valid until 2029)
- Full Vaccinations



## WORK ENQUIRIES

**Email**  
mail@linklinecrew.com

**Social Media**  
[@linklinecrew](#)

**Website**  
[www.linklinecrew.com](http://www.linklinecrew.com)

**Phone**  
020 8426 2200

## EQUIPMENT

- Sony FX9 & FX6 Cameras
- Multiple Lens Kits
- Full Lighting Package
- Ronin RS2 Gimbal
- Pro Sup Tango Slider
- Various Wireless Monitoring
- Multiple Accessories
- VW T6 Transporter Van